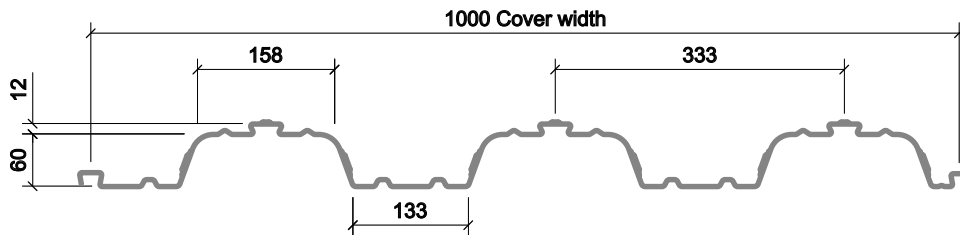


TR60⁺™



Description

The TR60 profile was SMD's first trapezoidal profile, added to our product range in 1992. Further research and development in recent years has seen our trapezoidal products evolve into the TR+ range. The TR60+ profile enables un-propped spans in excess of 3.5m.

Benefits

- Reduced concrete volume
- Enhanced speed of installation due to the 1m cover width
- Trough stiffeners positioned to ensure central stud position
- TAB-Deck™ fibre concrete option

Gauges

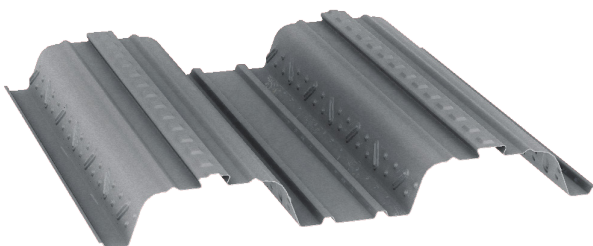
- 0.9mm
- 1.0mm
- 1.2mm

Specification

- 1000mm cover width
- 60mm deep (72mm to top re-entrant)

Steel Grade

- S350
- S450



Finishes

- Galvanised (Z275)
- HD (ZM310)

Profile Properties

Nominal Thickness mm	Design Thickness (bare steel) mm	Weight of Profile kg/m ²	Weight of Profile kN/m ²	Height of Neutral Axis mm	Area of Steel mm ² /m	Moment of Inertia cm ⁴ /m
0.9	0.86	10.03	0.098	33.6	1216	93.5
1.0	0.96	11.12	0.109	33.6	1355	102.1
1.2	1.16	13.33	0.131	33.7	1633	119.8

Section properties are calculated assisted by testing in accordance with Eurocode 3.

Fire Insulation Thickness

Minimum Insulation Thickness (x) of Concrete (mm)

Fire Rating	NWC	LWC
1.0 Hour	60	60
1.5 Hour	70	70
2.0 Hour	80	80
3.0 Hour	115	100
4.0 Hour	130	115



The image and table above details the minimum insulation thickness required to suit fire design criteria in accordance with SCI PN005c-GB or BS5950 Part 8.

Concrete Volume and Weight

Slab Depth mm	Volume of Concrete m³/m²	Weight of Concrete (Normal Weight)		Weight of Concrete (Lightweight)	
		Wet (kN/m²)	Dry (kN/m²)	Wet (kN/m²)	Dry (kN/m²)
130	0.096	2.26	2.21	1.79	1.70
150	0.116	2.73	2.67	2.16	2.05
200	0.166	3.91	3.83	3.09	2.93

Deflection – This table is based on concrete poured to a constant thickness and does not take account for deflection of the decking or supporting beams (as a guide, to account for the deflection of the decking, a concrete volume of span/250 should be added to the figures indicated). Concrete Weight – These tables indicate concrete weight only and do not include the weight of decking or reinforcement. Concrete weights are based on the concrete densities specified in BS EN 1991-1-1 as follows: Normal Weight Concrete – 2550kg/m³ (wet) and 2450 kg/m³ (dry). Lightweight Concrete – 2050kg/m³ (wet) and 1950 kg/m³ (dry).

Load Tables (Eurocode)

Steel Grade S350 – Normal Weight Concrete

Total Unfactored Applied Load (kN/m²) Maximum Permissible Span (m)

Span Condition	Fire Rating (hours)	Slab Depth (mm)	Mesh	0.9mm Gauge				1.0mm Gauge				1.2mm Gauge			
				3.5	5.0	7.5	10.0	3.5	5.0	7.5	10.0	3.5	5.0	7.5	10.0
				Single*	1.0	130	A142	3.125	3.125	2.796	2.519	3.383	3.383	2.870	2.585
		150	A193	3.006	3.006	3.006	2.843	3.203	3.203	3.203	2.914	3.562	3.562	3.562	3.046
		200	A393	2.688	2.688	2.688	2.688	2.866	2.866	2.866	2.866	3.219	3.219	3.219	3.219
	2.0	150	A193	3.006	3.006	2.366	2.145	3.203	3.203	2.414	2.188	3.562	3.562	2.503	2.269
		170	A252	2.883	2.883	2.649	2.410	3.054	3.054	2.695	2.453	3.407	3.407	2.788	2.531
		200	A393	2.688	2.688	2.688	2.688	2.866	2.866	2.866	2.866	3.219	3.219	3.219	3.219
Double	1.0	130	A142	3.455	3.455	2.796	2.519	3.788	3.788	2.870	2.585	4.238	4.238	3.011	2.711
		150	A193	3.230	3.230	3.141	2.843	3.546	3.546	3.219	2.914	3.996	3.996	3.366	3.046
		200	A393	2.804	2.804	2.804	2.804	3.085	3.085	3.085	3.085	3.602	3.602	3.602	3.602
	2.0	150	A193	3.230	3.116	2.366	2.145	3.546	3.180	2.414	2.188	3.996	3.296	2.503	2.269
		170	A252	3.040	3.040	2.649	2.410	3.341	3.341	2.695	2.453	3.895	3.608	2.788	2.531
		200	A393	2.804	2.804	2.804	2.804	3.085	3.085	3.085	3.085	3.602	3.602	3.407	3.116
Double	1.0	130	HE 1/50*	3.455	3.455	3.130	2.825	3.788	3.788	3.200	2.880	4.238	4.238	3.320	3.000
		150	HE 1/50*	3.230	3.230	3.230	3.230	3.546	3.546	3.546	3.290	3.996	3.996	3.750	3.400
		200	HE 1/50*	2.804	2.804	2.804	2.804	3.085	3.085	3.085	3.085	3.602	3.602	3.602	3.602
	2.0	150	HE 1/50*	3.230	3.230	2.710	2.455	3.340	3.340	2.550	2.480	3.996	3.730	2.830	2.550
		170	HE 1/50*	3.040	3.040	3.040	2.815	3.341	3.341	3.130	2.850	3.895	3.895	3.310	2.920
		200	HE 1/50*	2.804	2.804	2.804	2.804	3.085	3.085	3.085	3.085	3.602	3.602	3.610	3.440

Figures shown in red are governed by the normal (composite) or fire stages, greater spans can be achieved by increasing reinforcement or fibre type/dosage - refer to SMD Elements® Design Software, Elements® Span Check App or The SMD White Book for more extensive design information.

For full design notes relating to these tables refer to page 4 of The White Book.

* TAB-Deck™ fibre concrete spans are based on a dosage of 30kg/m³ - For further guidance refer to the TAB-Deck™ design manual at www.smdltd.co.uk.



www.smdstockyards.co.uk

Brentwood London
 Tel: +44 (0) 1277 812490
 Email: alan@smdstockyards.co.uk
 Unit 27, Childeritch Industrial Park,
 Little Warley, Essex CM13 3HD
 Fax: +44 (0) 1277 812491

Ashbourne Midlands
 Tel: +44 (0) 1335 300999
 Email: jade@smdstockyards.co.uk
 Moor Farm Road West, The Airfield,
 Ashbourne, Derbyshire DE6 1HD
 Fax: +44 (0) 1335 300888

Leeds Northern
 Tel: +44 (0) 1202 714990
 Email: kevin@smdstockyards.co.uk
 Calderbank, River Street, Brighouse,
 West Yorkshire HD6 1LU
 Fax: +44 (0) 1202 714980

Coatbridge Scotland
 Tel: +44 (0) 1698 622202
 Email: kevin@smdstockyards.co.uk
 12 Palaceraig Street, Coatbridge,
 North Lanarkshire ML5 4RY
 Fax: +44 (0) 1202 714980